



IRONWORKER TOOLING GUIDE

strandTM

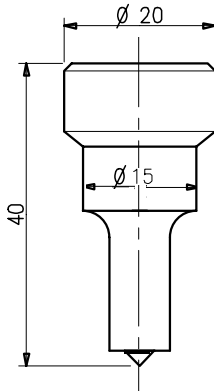
ironworker tooling

strandTM






STRAND ironworker tooling is produced to exacting standards and are suitable for all types of steelworkers and punching machines. Proven manufacturing techniques and a closely controlled heat treatment process guarantees optimum performance. In addition to our comprehensive range of standard stocked products we can also offer oversized tooling and design solutions for virtually any application.

GROUP 1



SWGR1P - PUNCH

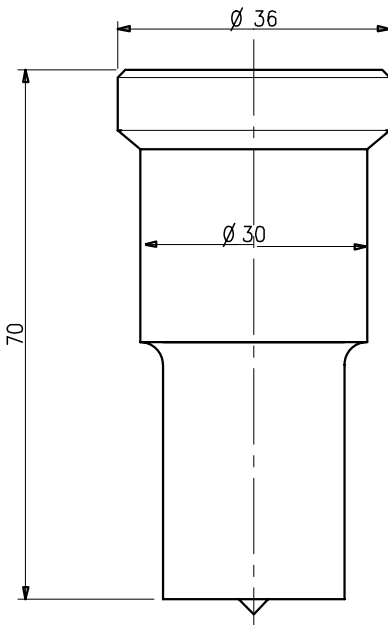
	3-15mm In 1.0 mm increments
	6x15 8x15 10x15
	3 - 10mm In 1.0 mm increments

Other shapes & sizes made to order.




COMPATIBLE TO :

Mubea, Sunrise >2002, Metalmaster

GROUP 2



SWGR2P - PUNCH




	3-30mm In 1.0 mm increments
	6x20, 6x25, 6x30 8x20, 8x25, 8x30 10x20, 10x25, 10x30 12x20, 12x25, 12x30 14x20, 14x25, 14x30 16x25, 16x30 18x25, 18x30 20x30, 22x30, 24x30
	3 - 21mm In 1.0 mm increments

Other shapes & sizes made to order.

COMPATIBLE TO :

Mubea, Sunrise >2002, Metalmaster, Marksman

SWGR3P - PUNCH

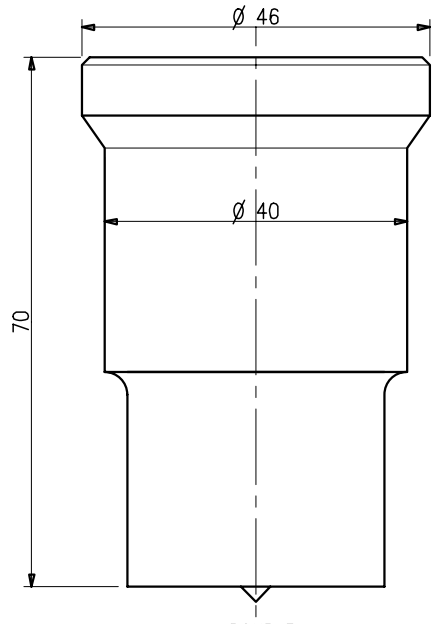
	30-40mm In 1.0 mm increments
	10 x38, 12x38,14x38 16x38, 20x38, 22x38 24x38, 26x38
	21-28mm In 1.0 mm increments

Other shapes & sizes made to order.




COMPATIBLE TO :

Mubea, Sunrise, Metalmaster

GROUP 3



SWGR4P - PUNCH

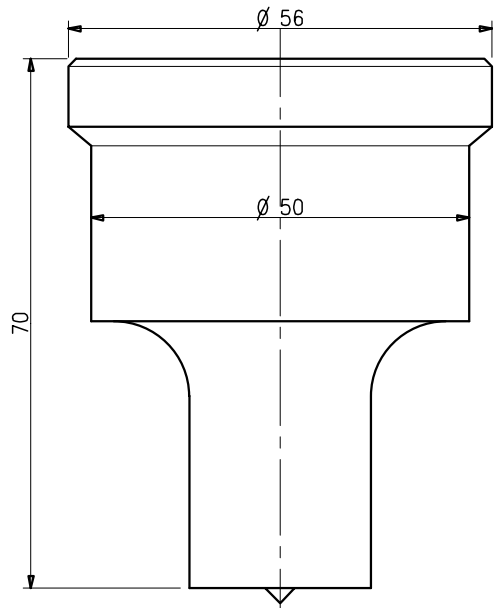
	40-50mm In 1.0 mm increments
	Oblong sizes upto 50mm made to order
	28-35mm In 1.0 mm increments

Other shapes & sizes made to order.

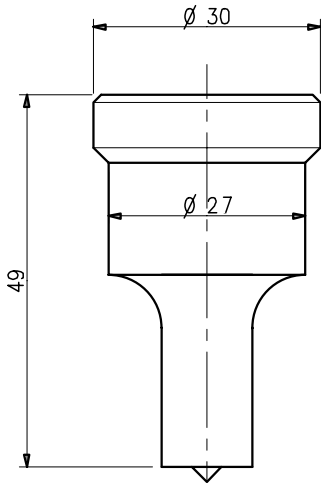
COMPATIBLE TO :

Mubea, Sunrise, Metalmaster




GROUP 4



210/13



SW210/13P - PUNCH

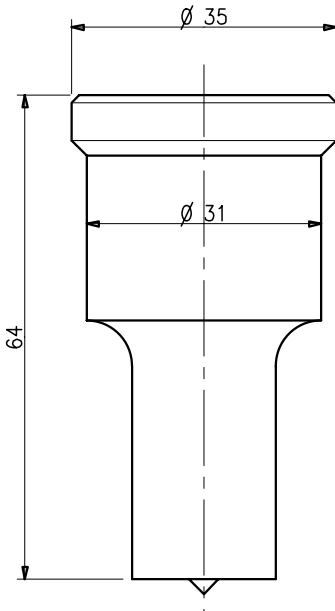
	3-27mm In 1.0mm increments
	6x20, 6x25 8x20, 8x25 10x20, 10x25 12x20, 12x25 14x20, 14x25 16x25 18x25
	3-19mm In 1.0mm increments

Other shapes & sizes made to order.




COMPATIBLE TO :

Peddinghaus 210/11, 210/13, Ficep 13, Kippen

210/16



SW210/16P - PUNCH




	3-31mm In 1.0mm increments
	6x20, 6x25, 6x30 8x20, 8x25, 8x30 10x20, 10x25, 10x30 12x20, 12x25, 12x30 14x20, 14x25, 14x30 16x25, 16x30, 18x25, 18x30 20x30, 22x30, 24x30
	3-21mm In 1.0mm increments

Other shapes & sizes made to order.

COMPATIBLE TO :

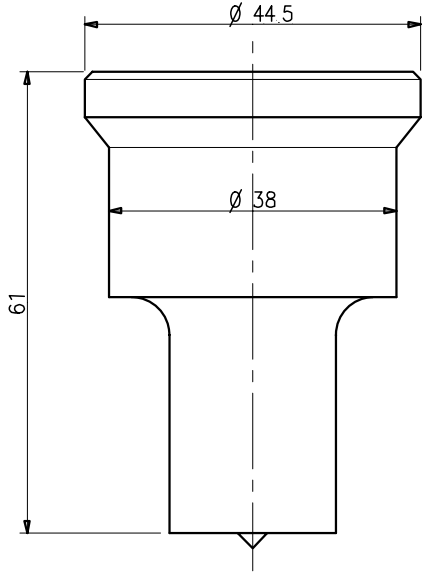
Peddinghaus 210/16, 210/20, Sunrise 2002>,
Geka 8(16), Durma, IMS, Gairu, Kingsland 9001,
Scotchman

SW9004P - PUNCH




	3-38mm In 1.0 mm increments
	6x20, 6x25, 6x30, 8x20, 8x25, 8x30, 10x20, 10x25, 10x30, 10x38, 12x20, 12x25, 12x30, 12x38, 14x20, 14x25, 14x30, 14x38, 16x25, 16x30, 16x38, 18x25, 18x30, 18x38, 20x30, 20x38, 22x30, 22x38, 24x30, 24x38, 26x38
	3-26mm In 1.0 mm increments

Other shapes & sizes made to order.

COMPATIBLE TO :
All Kingsland machines

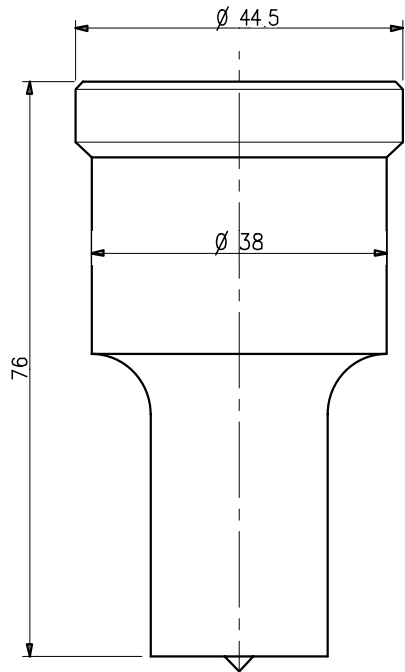


SW9006P - PUNCH

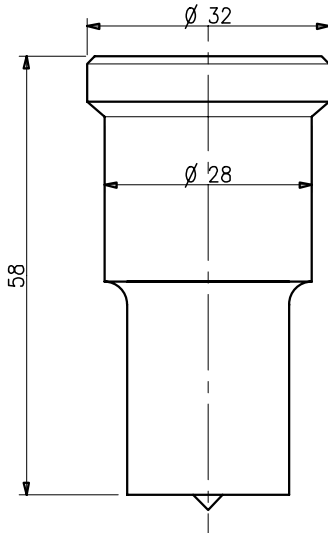
	3-38mm In 1.0 mm increments
	6x20, 6x25, 6x30, 8x20, 8x25, 8x30, 10x20, 10x25, 10x30, 10x38, 12x20, 12x25, 12x30, 12x38, 14x20, 14x25, 14x30, 14x38, 16x25, 16x30, 16x38, 18x25, 18x30, 18x38, 20x30, 20x38, 22x30, 22x38, 24x30, 24x38, 26x38
	3-26mm In 1.0 mm increments

Other shapes & sizes made to order.



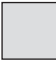
COMPATIBLE TO :
All Kingsland machines



GEKA 13



SWGK13P - PUNCH

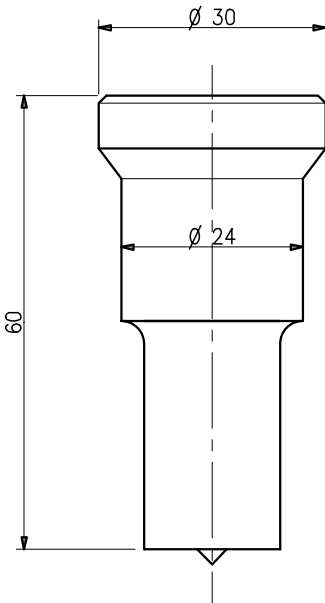
	3-28mm In 1.0mm increments
	6x20, 6x25, 8x20, 8x25, 10x20, 10x25, 10x28, 12x20, 12x25, 12x28, 14x20, 14x25, 14x28, 16x20, 16x25, 16x28, 18x25, 18x28, 20x28, 22x28
	3-19mm In 1.0mm increments

Other shapes & sizes made to order.




COMPATIBLE TO :

Geka, Edwards, Piranha

NITTO



SWNITTP - PUNCH




	3-24mm In 1.0 mm increments
	6x20, 6x24 8x20, 8x24 10x20, 10x24 12x20, 12x24 14x20, 14x24 16x24, 18x24
	3-16mm In 1.0 mm increments

Other shapes & sizes made to order.

COMPATIBLE TO :

Nitto-Kohki, Sefer, Alfa

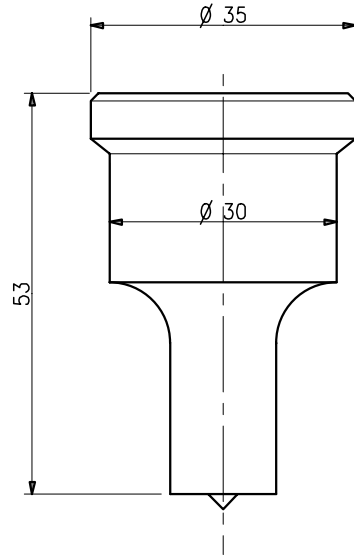
SWOM13P - PUNCH

	3-30mm In 1.0 mm increments
	6x20, 6x25, 6x30 8x20, 8x25, 8x30 10x20, 10x25, 10x30 12x20, 12x25, 12x30 14x20, 14x25, 14x30 16x25, 16x30 18x25, 18x30 20x30, 22x30, 24x30
	3-21mm In 1.0 mm increments


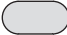

Other shapes & sizes made to order.

COMPATIBLE TO :
Omara 13, Thomas

OMERA 13



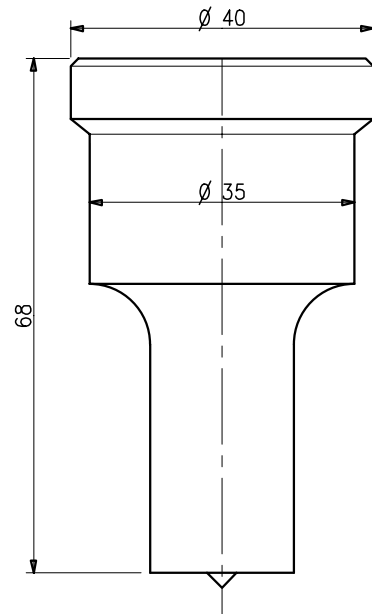
SWOM16P - PUNCH

	3-35mm In 1.0 mm increments
	6x20, 6x25, 6x30, 8x20, 8x25, 8x30, 10x20, 10x25, 10x30, 10x35, 12x20, 12x25, 12x30, 12x35, 14x20, 14x25, 14x30, 14x35, 16x25, 16x30, 16x35, 18x25, 18x30, 18x35, 20x30, 20x35, 22x30, 22x35, 24x30, 24x35, 26x35
	3-24mm In 1.0 mm increments

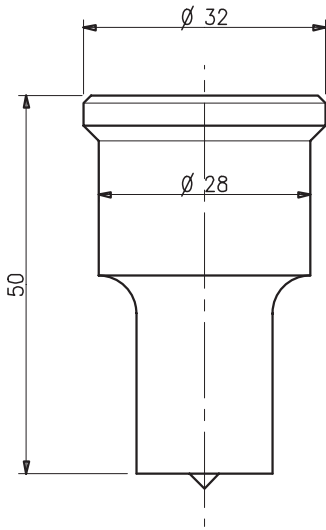
Other shapes & sizes made to order.

COMPATIBLE TO :
Omara 16, Thomas




OMERA 16



FICEP 14



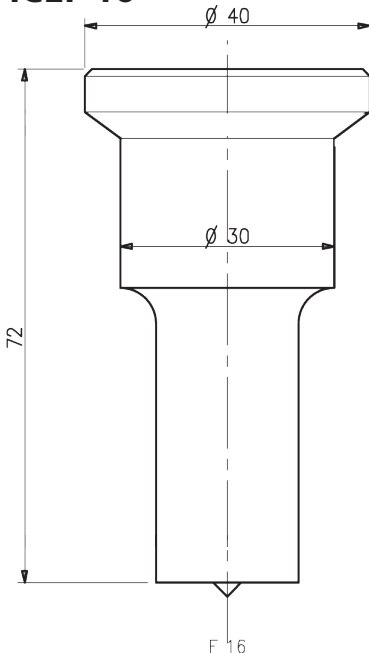
SWF14P - PUNCH

	3-28mm In 1.0mm increments
	6x20, 6x25, 6x28 8x20, 8x25, 8x28 10x20, 10x25, 10x28 12x20, 12x25, 12x28 14x20, 14x25, 14x28 16x25, 16x28, 18x25, 18x28 20x28, 22x28
	3-19mm In 1.0mm increments




Other shapes & sizes made to order.

COMPATIBLE TO :
Ficep

FICEP 16






SWF16P - PUNCH

	3-30mm In 1.0 mm increments
	6x20, 6x25, 6x30 8x20, 8x25, 8x30 10x20, 10x25, 10x30 12x20, 12x25, 12x30 14x20, 14x25, 14x30 16x25, 16x30 18x25, 18x30 20x30, 22x30, 24x30
	3-21mm In 1.0 mm increments

Other shapes & sizes made to order.

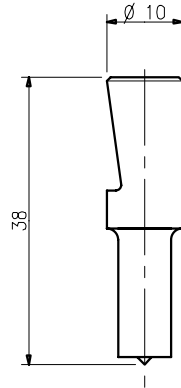
COMPATIBLE TO :
Ficep

SW23N/8P - PUNCH




	3-10mm In 1.0mm increments
	Oblong sizes up to 10mm made to order
	3-7mm In 1mm step

Other shapes & sizes made to order.

COMPATIBLE TO :
Mubea Hand Punch

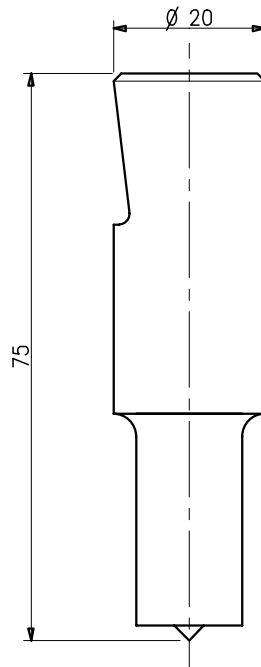


SW22N/16P - PUNCH

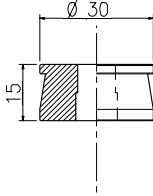
	3-20mm In 1.0 mm increments
	Oblong sizes up to 20mm made to order
	3-14mm In 1.0 mm increments

Other shapes & sizes made to order.


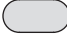

COMPATIBLE TO :
Mubea Hand Punch



GROUP 1



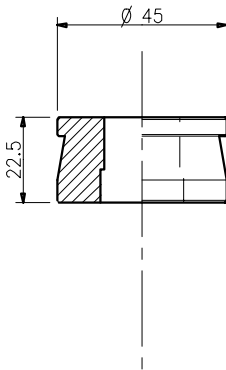
SWGR1D - DIE

	3-15mm In 1.0 mm increments
	6x15 8x15 10x15
	3 - 10mm In 1.0 mm increments




Other shapes & sizes made to order.

COMPATIBLE TO :
Mubea, Sunrise, Metal Master

GROUP 2






SWGR2D - DIE

	3-30mm In 1.0 mm increments
	6x20, 6x25, 6x30, 8x20, 8x25, 8x30, 10x20, 10x25, 10x30, 12x20, 12x25, 12x30, 14x20, 14x25, 14x30, 16x25, 16x30, 18x25, 18x30, 20x30, 22x30, 24x30
	3-21mm In 1.0 mm increments

Other shapes & sizes made to order.

COMPATIBLE TO :
Mubea, Sunrise >2002, Metal Master, Marksman

SWGR4D - DIE

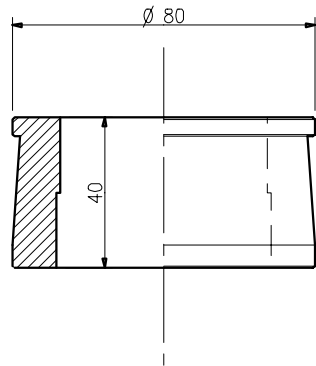
	40-50mm In 1.0 mm increments
	Oblong sizes up to 50mm made to order
	28-35mm In 1.0 mm increments

Other shapes & sizes made to order.




COMPATIBLE TO :

Mubea, Sunrise, Metal Master

GROUP 4



SWNO.8D - DIE

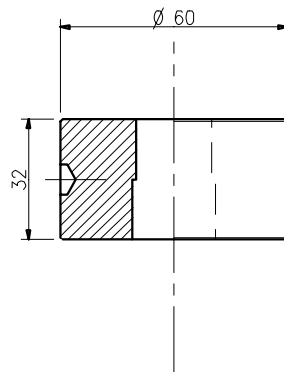
	3-40mm In 1.0 mm increments
	6x20, 6x25, 6x30, 8x20, 8x25, 8x30, 10x20, 10x25, 10x30, 10x38, 12x20, 12x25, 12x30, 12x38, 14x20, 14x25, 14x30, 14x38, 16x25, 16x30, 16x38 18x25, 18x30, 18x38, 20x30, 20x38, 22x30, 22x38 24x30, 24x38, 26x38
	3-28mm In 1.0mm increments

Other shapes & sizes made to order.

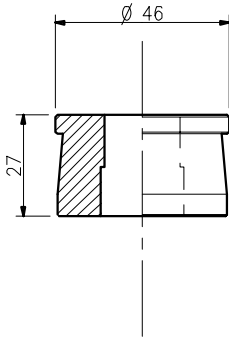
COMPATIBLE TO :

Kingland 9024, Mubea Group 3, Marksman, Sunrise,
Metalmaster, Geka, Durma


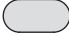

NO. 8



210/13



SW210/13D - DIE

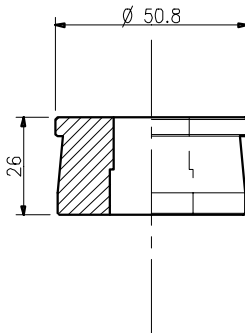
	3-30mm In 1.0 mm increments
	6x20, 6x25, 8x20, 8x25, 10x20, 10x25, 10x28, 10x30, 12x20, 12x25, 12x28, 12x30, 14x20, 14x25, 14x28, 14x30, 16x25, 16x28, 18x25, 18x30, 18x28, 20x28, 20x30, 22x28, 22x30, 24x30
	3 -19mm In 1.0 mm increments

Other shapes & sizes made to order.




COMPATIBLE TO :

Peddinghaus 210/11, 210/13, Sunrise 2002>, Geka, Edwards, Piranha, Kippen

210/16



SW210/16D - DIE

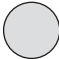


	3-31mm In 1.0mm increments
	6x20, 6x25, 6x30, 8x20, 8x25, 8x30, 10x20, 10x25, 10x30 12x20, 12x25, 12x30, 14x20, 14x25, 14x30, 16x25, 16x30, 18x25, 18x30, 20x30, 22x30, 24x30
	3-22mm In 1mm increments

Other shapes & sizes made to order.

COMPATIBLE TO :

Peddinghaus 210/16, 210/20, IMS, Gairu, Scotchman

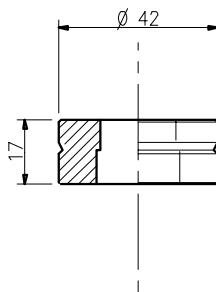
SWNITTD - DIE

	3-24mm In 1.0 mm increments
	6x20, 6x24 8x20, 8x24 10x20, 10x24 12x20, 12x24 14x20, 14x24 16x24 18x24
	3-16mm In 1.0 mm increments




Other shapes & sizes made to order.

COMPATIBLE TO :

Nitto-Kohki, Selfer, Alfa



SWOM13D - DIE

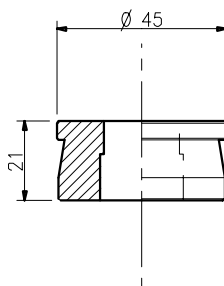
	3-30mm In 1.0 mm increments
	6x20, 6x25, 6x30 8x20, 8x25, 8x30 10x20, 10x25, 10x30 12x20, 12x25, 12x30 14x20, 14x25, 14x30 16x25, 16x30 18x25, 18x30 20x30, 22x30, 24x30
	3-21mm In 1.0 mm increments

Other shapes & sizes made to order.

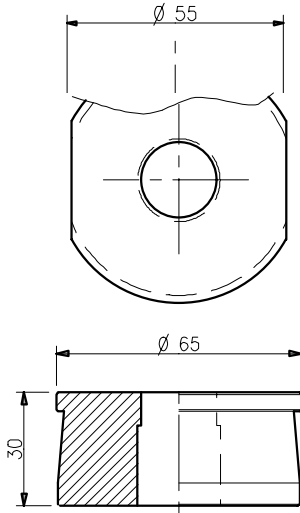
COMPATIBLE TO :

Omera 13, Thomas




OMERA 13



OMERA 16



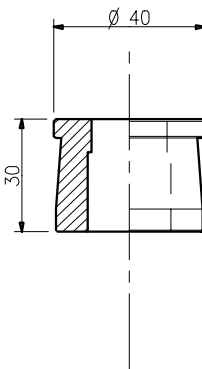
SWOM16D - DIE

	3-35mm In 1.0 mm increments
	6x20, 6x25, 6x30, 8x20, 8x25, 8x30, 10x20, 10x25, 10x30, 10x35, 12x20, 12x25, 12x30, 12x35, 14x20, 14x25, 14x30, 14x35, 16x25, 16x30, 16x35, 18x25, 18x30, 18x35, 20x30, 20x35, 22x30, 22x35, 24x30, 24x35, 26x35
	3-24mm In 1.0 mm increments




Other shapes & sizes made to order.

COMPATIBLE TO :
Omera 16, Thomas

FICEP 13






SWF13D - DIE

	3-27mm In 1.0mm increments
	6x20, 6x25 8x20, 8x25 10x20, 10x25 12x20, 12x25 14x20, 14x25 16x25 18x25
	3-19mm In 1.0mm increments

Other shapes & sizes made to order.

COMPATIBLE TO :
Ficep

SWF14D - DIE

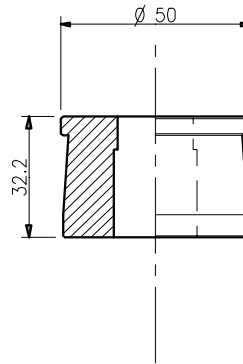
	3-28mm In 1.0mm increments
	6x20, 6x25, 6x28 8x20, 8x25, 8x28 10x20, 10x25, 10x28 12x20, 12x25, 12x28 14x20, 14x25, 14x28 16x25, 16x28, 18x25, 18x28 20x28, 22x28
	3-19mm In 1.0mm increments

Other shapes & sizes made to order.




COMPATIBLE TO :

Ficep

FICEP 14



SWF16D - DIE

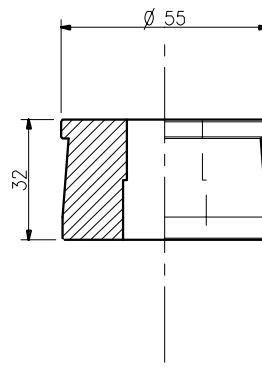
	3-30mm In 1.0 mm increments
	6x20, 6x25, 6x30 8x20, 8x25, 8x30 10x20, 10x25, 10x30 12x20, 12x25, 12x30 14x20, 14x25, 14x30 16x25, 16x30 18x25, 18x30 20x30, 22x30, 24x30
	3-21mm In 1.0 mm increments

Other shapes & sizes made to order.

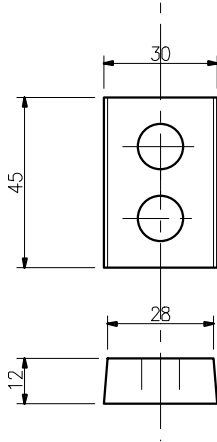
COMPATIBLE TO :

Ficep




FICEP 16



23N/8



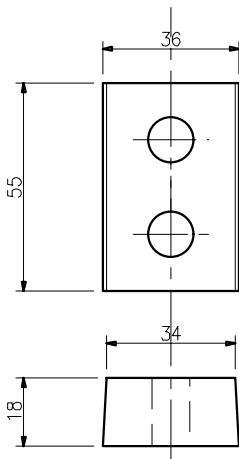
SW23N/8D - DIE

	3-10mm In 1.0mm increments
	Oblong sizes up to 10mm made to order
	3-7mm In 1.0mm step




Other shapes & sizes made to order.

COMPATIBLE TO :
Mubea Hand Punch

22N/16



SW22N/16D - DIE

	3-20mm In 1.0 mm increments
	Oblong sizes up to 20mm made to order
	3-14mm In 1.0 mm increments

Other shapes & sizes made to order.

COMPATIBLE TO :
Mubea Hand Punch

strand™



TOOLING TO SUIT

Alfra	Geka	Nitto Kohki	Scotchman
Coburn	Henry Pels	Nova Press	Selfer
Comaco	IMS	Omes	Stanko
Diacro	Isumi	Omera	Sunrise
Durma	J.R. 65	Peddinghaus	Suresharp
Dvorak	Jing Jang	Pacific	Thomas
Edwards	Kippen	Piranha	TSP (hot work)
Enerpac	Kingsland	Pullmax	Uni-hydro
Fabryka	Madison	Punchtech	Valdarno
Fabtech	Marksman	QPS	Vitte
Femco	Machine Maker	Rocky	Weidemann
Ficep	Metalmaster	Sahinler	
Gairu	Mubea	Samurai	

INSIST ON PREMIUM STRAND TOOLING!